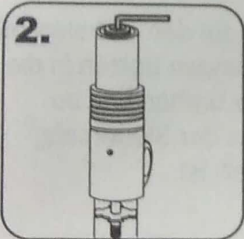


Installations

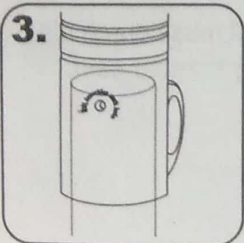
! Remove the current stem(B) and get ready for assembly with HEADSUP-ET.



1. Loosen to remove the cap. Use lever if the nut cap is too tight.



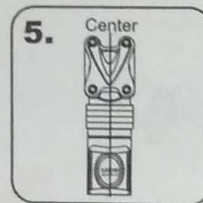
2. Place HEADSUP-ET on the steerer tube and tighten the long bolt to the star nut.



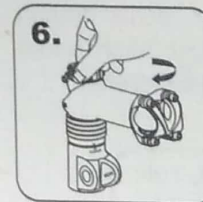
3. Steerer tube must be seen through the perspective hole.



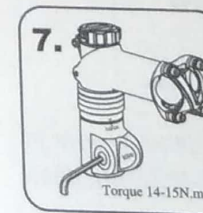
4. Align HEADS UP-ET with the front wheel, facing forward, then tighten the wedges



5. Adjust the spacers to your preferred height, then place the stem onto HEADS UP-ET.



6. Securely screw back the top cap and close down the lever.



7. Double confirm all parts (HEADS UP-ET, stem, steerer tube and front wheel) are aligned, facing to the front with tightened bolts. Suggested torque 14~15Nm.